

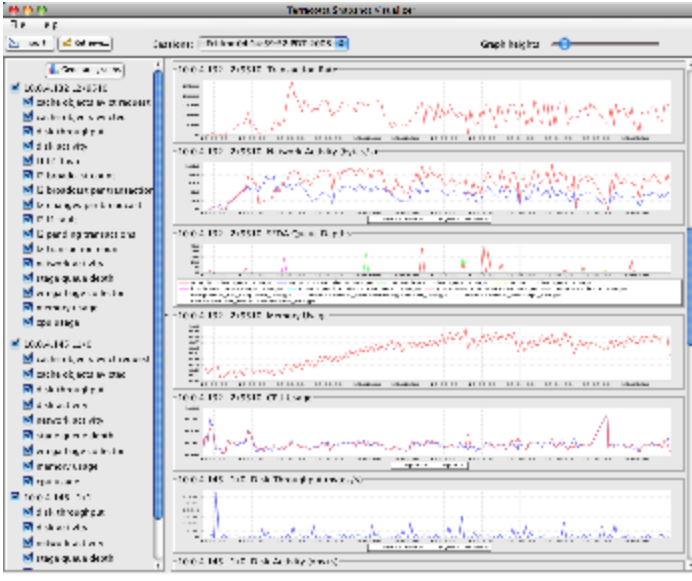
# Get The Snapshot Visualization Tool

## About Terracotta Documentation

This documentation is about Terracotta DSO, an advanced distributed-computing technology aimed at meeting special clustering requirements.

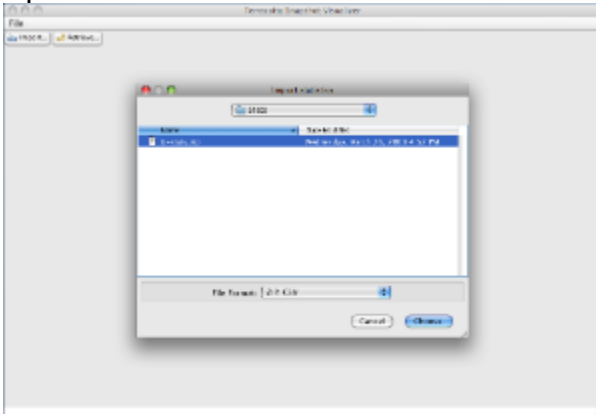
Terracotta products without the overhead and complexity of DSO meet the needs of almost all use cases and clustering requirements. To learn how to migrate from Terracotta DSO to standard Terracotta products, see [Migrating From Terracotta DSO](#). To find documentation on non-DSO (standard) Terracotta products, see [Terracotta Documentation](#). Terracotta release information, such as release notes and platform compatibility, is found in [Product Information](#).

## Visualize Stats



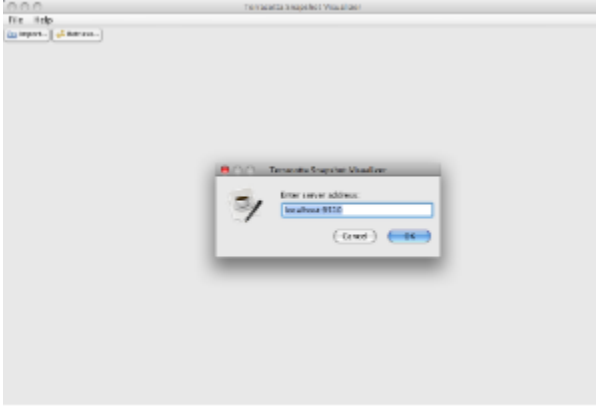
(click to enlarge)

## Import from a file



(click to enlarge)

## Import directly from the server



(click to enlarge)

Release: 3.6

Publish Date: November, 2011 [Documentation Archive »](#)

## Get the Snapshot Visualization Tool



The Snapshot Visualization Tool is being phased out and may not work correctly with more recent versions of Terracotta clusters.

The Snapshot Visualization Tool allows you to see the snapshots you've recorded. You can see all of the stats in a single page, including:

- CPU
- Memory Usage
- Txns
- Thread Dumps
- Disk Activity
- Terracotta Statistics (SEDA Queue Depths, L1 L2 Fault Flush etc)
- and much more!

---

## Installation Instructions

### Terracotta 2.7+ Users

- For the standard distribution, execute:  
`TC_HOME/bin/tim-get.sh install tim-svt (.bat for Windows)`
- For the DSO Eclipse plug-in, use the *Terracotta/Update modules...* menu.

The Developer Console will automatically detect and launch the SVT when you press the "View" statistics button. Also, you can select *Tools/Show SVT...* from the main menu.

### Terracotta 2.6 Users

- Download the [svt-1.0.4.jar](#)
- Copy into your `TC_HOME/lib` directory
- *Restart* the Admin Console